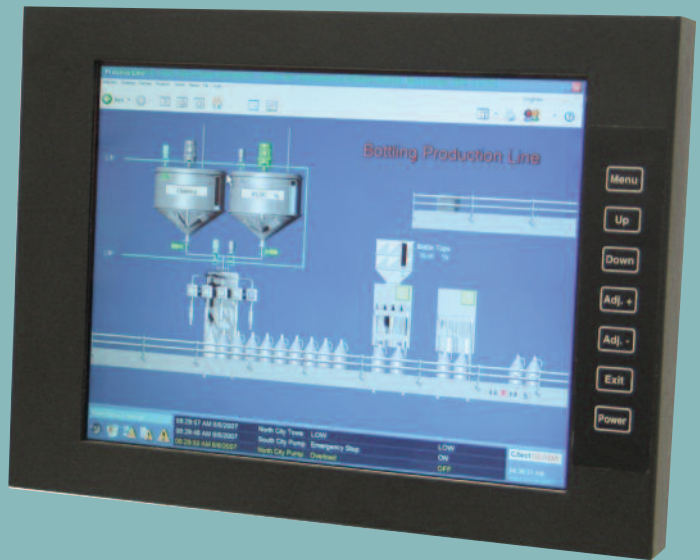


- Active Matrix LCD Screens
- 8.4" through 15" Displays
- 800 x 600 – 1280 x 1024 Resolution
- High Contrast/High Brightness For Exceptional Display Quality
- Desktop, Rack and Panel Mount Configurations
- Capacitive and Resistive Touch Screens (optional)
- Video and S-Video In (optional)
- All in the Space Saving and Ergonomic Benefits of Flat Panel Technology
- Industrial, NEMA, and Mil-Spec ratings



The color flat panel monitors from Industrial Computing offer impressive display quality, superior space utilization and a wide variety of screen sizes and resolutions. These displays are designed to meet the most demanding graphic applications. The monitors are available in ruggedized and shock-mounted configurations, for a range of industrial, airborne and military applications. With a slim profile and a wide variety of mounting methods, the Industrial Computing flat panel monitors can be mounted in almost any environment, especially where space is at a premium.

Industrial Computing's flat panel displays are designed to provide specific advantages to serious users. Displays are available with touch screens, rugged shock-mounted housings, rack-mounts, daylight viewable screens, video inputs, and special OEM configurations. Installations range from desktop to Mil-Spec applications.

As a supplier to major industrial users, military contractors, defense agencies, and financial institutions, we are experienced in providing specialized display products. Industrial Computing provides a range of sizes and capabilities to allow it to supply exactly what is needed in a given application. By concentrating on supplying a product based upon commercial off the shelf (COTS) subassemblies, we can very cost-effectively approach most requirements.